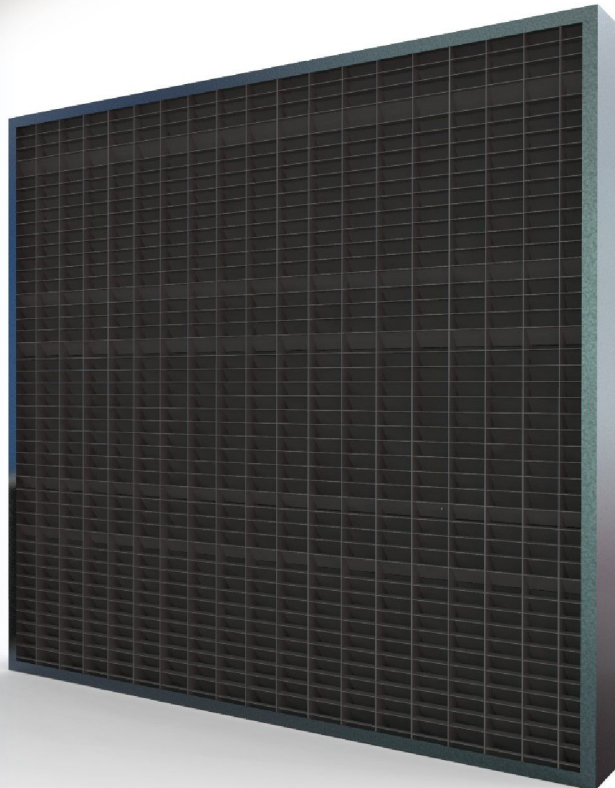
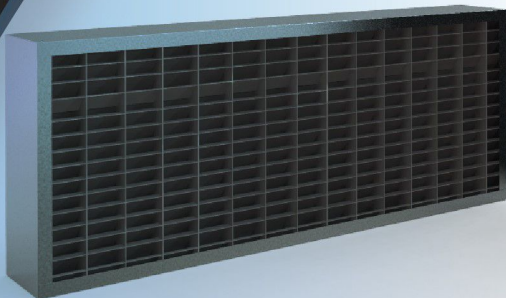


CHARACTERISTICS:



- fully reduction of light in farm where ever it is needed;
- possible production and assembling on customer's request;
- easy or installation manufactured from PP in black color;
- easy cleaning due to possibility of completely disassembling;
- airflow: $16.500\text{m}^3/\text{m}^2$;
- it is used on air inlet as well as on fans for air outlet.

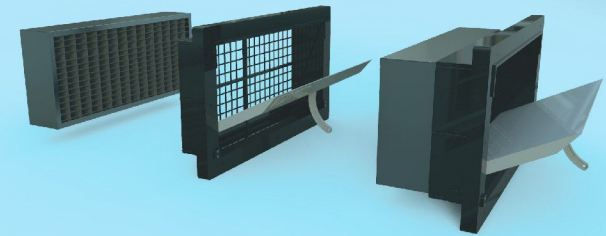
Cross section segment
light traps



On customer request segments can be produce in any dimension
(for air inlet or fans for air outlet) and put in galvanized sheet-metal frame.

LIGHT TRAPS IN FARM

Producet from polypropylene
UV-proof, in segments
dimension 160x250x50



Light trap installed on air inlet

Light trap installed on fan

